



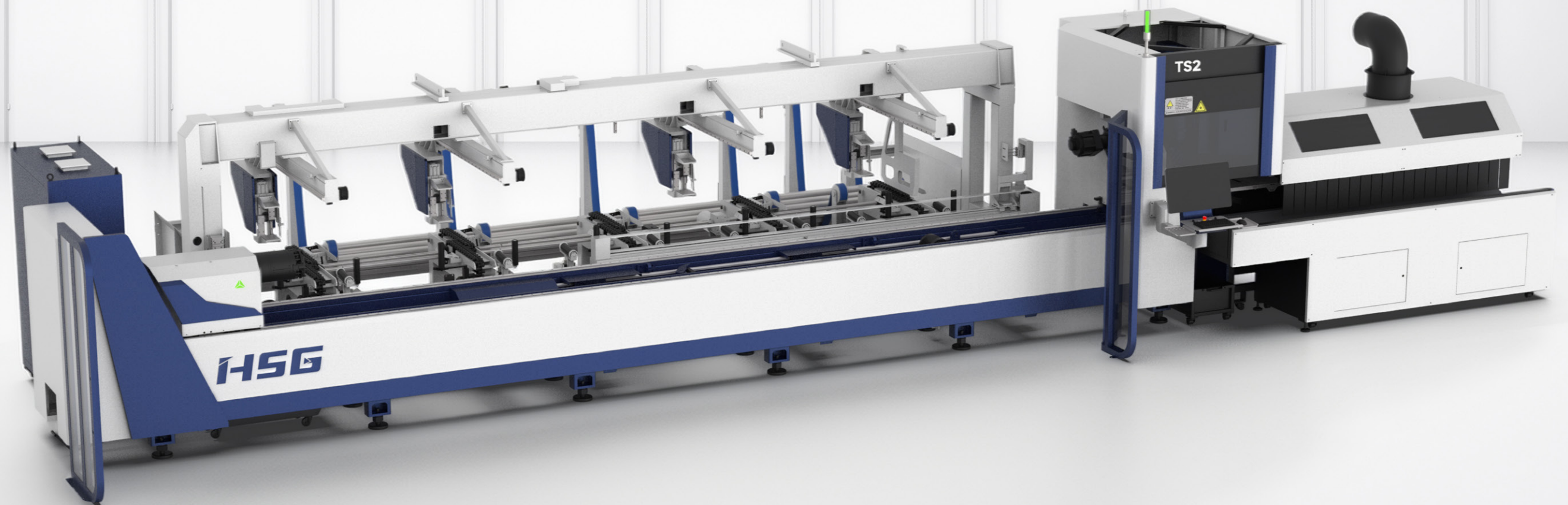
TS2 SERIES

High Performance Tube Laser Cutter

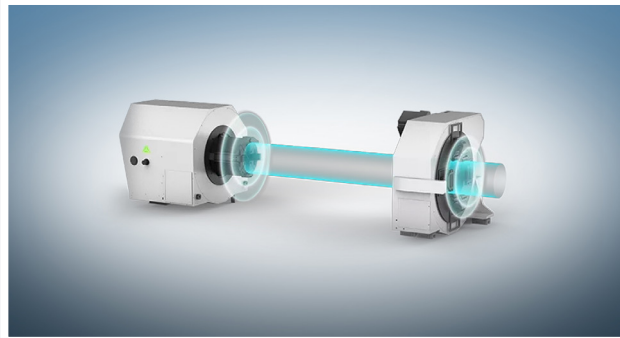


HSG TS2 SERIES

The HSG TS2 Tube Laser Cutting Machine is engineered for manufacturers who demand speed, flexibility, and cutting-edge technology. With high-speed linkage up to 140 m/min, 1.4G acceleration, and a smart chuck system that adjusts in just two seconds, the TS2 delivers fast, efficient, and accurate results across a wide range of tube sizes and profiles.

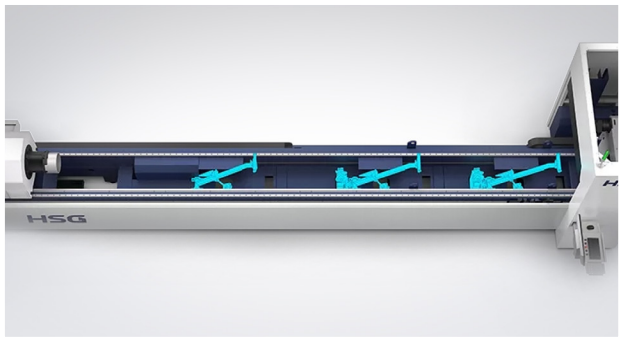


FEATURES



High-Speed Cutting

Achieve maximum productivity with a top linkage speed of 140 m/min, acceleration of 1.4G, and a chuck rotation speed of 140 r/min. Designed for high-efficiency cutting, the TS2 significantly reduces production cycles.

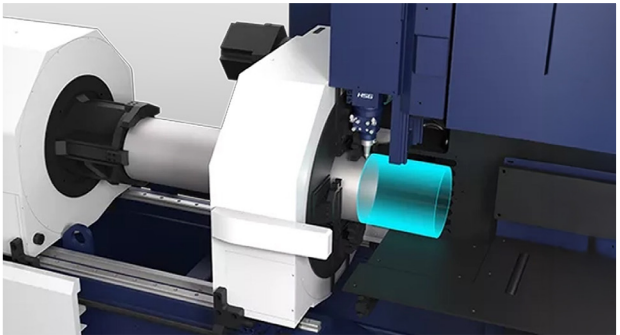


Responsive Dynamic Support

Independent, servo-driven follow-up supports provide real-time stability during tube cutting—ensuring high precision across a variety of workpiece sizes.

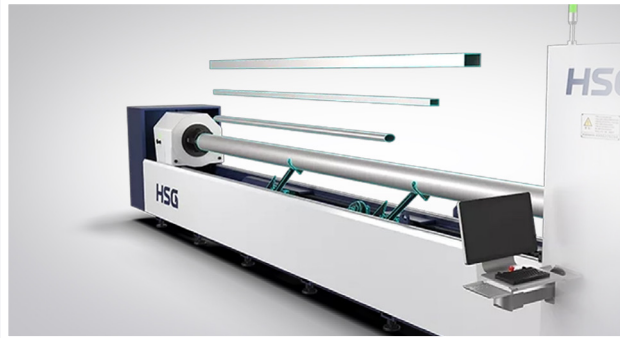
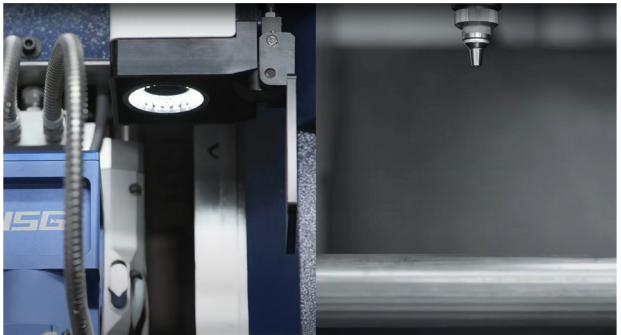
Smart Dynamic Chucks

Equipped with dual digital intelligent chucks, the TS2 automatically detects tube size and adjusts clamping pressure in just 2 seconds. The rear chuck also features integrated air and dust suction to keep both the workpiece and processing area clean.



AI-Powered Seamline Detection

AI-driven recognition accurately identifies and avoids tube weld seams during cutting, reducing waste and improving part quality.

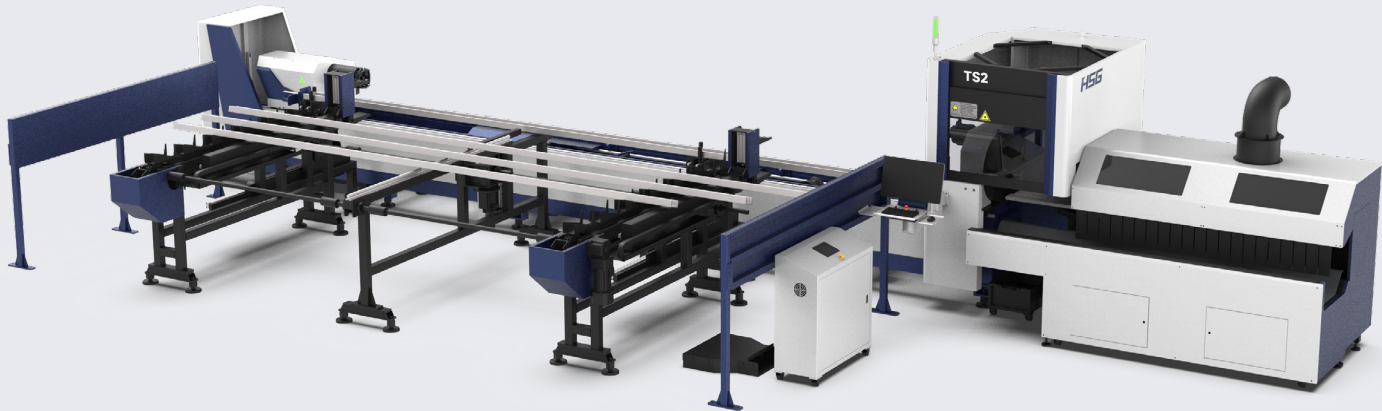
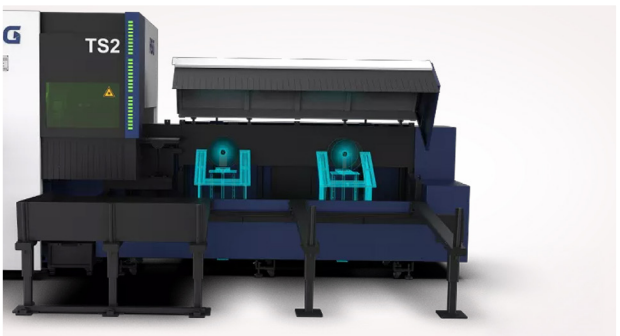


Versatile Tube & Profile Cutting

Standard dual clamps allow the machine to handle round tubes (Ø12–273 mm) weighing up to 300 kg, as well as complex profiles including channel steel, angle steel, and I-beams.

Dynamic Unloading System

An intelligent follow-up unloading system automatically adjusts to the workpiece length using one flip board and two concave wheels, offering stable support and smoother cutting.



SPECIFICATIONS

Parameters	TS2				
Power (kW)	3 - 6				
Chuck Speed (RPM)	140 r/min				
Max. Linkage Speed	140 m/min				
Max. Linkage Acceleration	1.4G				
X/Y Axis Positioning Accuracy	±0.05 mm/m				
X/Y Axis Repositioning Accuracy	±0.03 mm				
Tube Cutting Capacity (mm)	Round:	20 - 273	Open Steel Profile	Angle Steel:	80x80 - 180x180
	Square:	20x20 - 220x220		Channel Steel:	80x43 - 180x70
	Rectangle:	254		H Beam:	180 x 180
Tailing Length (mm)	> 220 (straight cut, double chuck clamping)				
Tube Length Range	1000 - 9200 mm				
Bevel Cutting Angle	45° (optional bevel cutting head)				
Loading Capacity (kg)	300 (33kg/m)				
Total Power / Current	55kW / 110A (3000w) 65kW / 130A (6000w)				
Dimensions (LxWxH) (mm)	16000 x 6400 x 2800				



LASER MACHINES

At Laser Machines, we are committed to being Australia's trusted partner for laser cutting machinery and related equipment. Specialising in cutting-edge solutions, we empower businesses with the highest quality machinery and unmatched service and support.

Our solutions-oriented approach prioritises customer satisfaction by delivering reliable products tailored to diverse needs and applications. With a focus on quality and service, we work closely with our clients throughout every step of their journey, ensuring they receive solutions designed to enhance operations and achieve their goals.

Backed by over 70 years of combined experience, our team collaborates directly with manufacturers to drive innovation and deliver machinery that meets the evolving demands of modern industries. At Laser Machines, we don't just supply equipment - we provide expertise, partnerships, and the tools for success.



www.lasermachines.com.au



Factory 17 116-118 Abbott Rd, Hallam VIC 3803



1300 561 963



sales@lasermachines.com.au

