

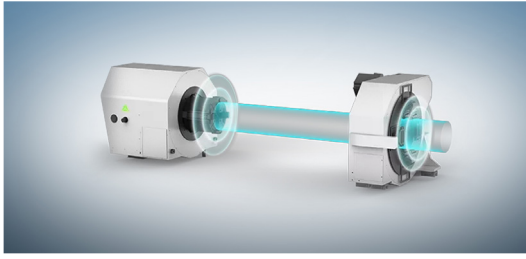
TS2 SERIES

High-Performance Tube Laser Cutter

3000 - 6000W

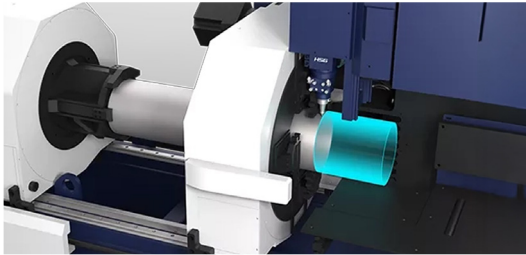


FEATURES



High-Speed Cutting

Achieve maximum productivity with a top linkage speed of 140 m/min, acceleration of 1.4G, and a chuck rotation speed of 140 r/min. Designed for high-efficiency cutting, the TS2 significantly reduces production cycles.



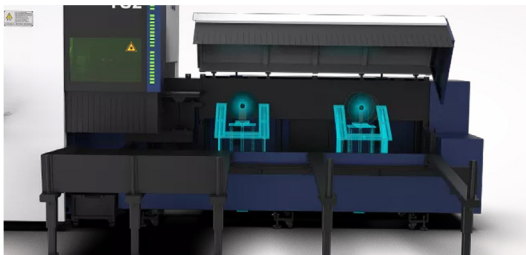
Smart Dynamic Chucks

Equipped with dual digital intelligent chucks, the TS2 automatically detects tube size and adjusts clamping pressure in just 2 seconds. The rear chuck also features integrated air and dust suction to keep both the workpiece and processing area clean.



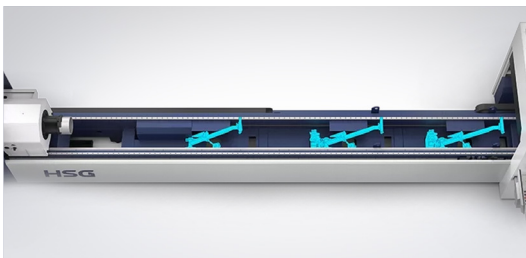
Versatile Tube & Profile Cutting

Standard dual clamps allow the machine to handle round tubes (Ø12–273 mm) weighing up to 300 kg, as well as complex profiles including channel steel, angle steel, and I-beams.



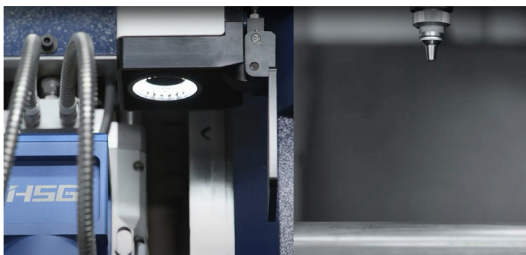
Dynamic Unloading System

An intelligent follow-up unloading system automatically adjusts to the workpiece length using one flip board and two concave wheels, offering stable support and smoother cutting.



Responsive Dynamic Support

Independent, servo-driven follow-up supports provide real-time stability during tube cutting—ensuring high precision across a variety of workpiece sizes.



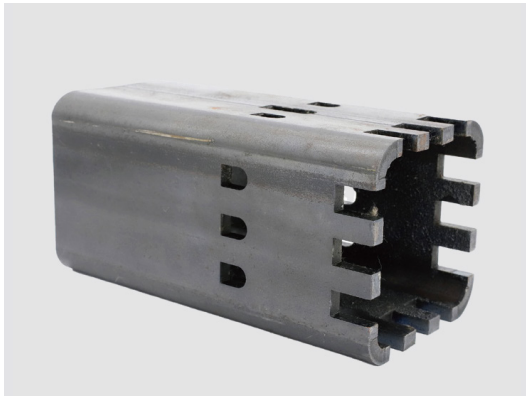
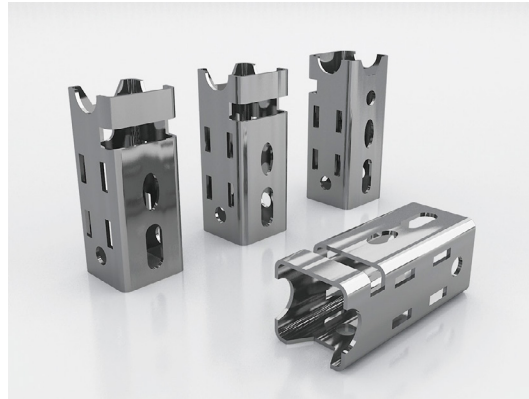
AI-Powered Seamline Detection

AI-driven recognition accurately identifies and avoids tube weld seams during cutting, reducing waste and improving part quality.

SPECIFICATIONS

Parameters	TS2				
Power (kW)	3 - 6				
Chuck Speed (RPM)	140 r/min				
Max. Linkage Speed	140 m/min				
Max. Linkage Acceleration	1.4G				
X/Y Axis Positioning Accuracy	±0.05 mm/m				
X/Y Axis Repositioning Accuracy	±0.03 mm				
Tube Cutting Capacity (mm)	Round:	20 - 273	Open Steel Profile	Angle Steel:	80x80 - 180x180
	Square:	20x20 - 220x220		Channel Steel:	80x43 - 180x70
	Rectangle:	254		H Beam:	180 x 180
Tailing Length (mm)	> 220 (straight cut, double chuck clamping)				
Tube Length Range	1000 - 9200 mm				
Bevel Cutting Angle	45° (optional bevel cutting head)				
Loading Capacity (kg)	300 (33kg/m)				
Total Power / Current	55kW / 110A (3000w) 65kW / 130A (6000w)				
Dimensions (LxWxH) (mm)	16000 x 6400 x 2800				

CUTTING SAMPLES



lasermachines.com.au

1300 561 963

Factory 17 / 116 - 118 Abbott Rd,
Hallam, VIC 3803

Unit 2 / 56 Central Hills Drive,
Gregory Hills, NSW 2557

LASER MACHINES