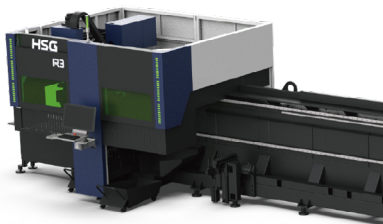




## R3R SERIES

Heavy Duty Tube Laser Cutter





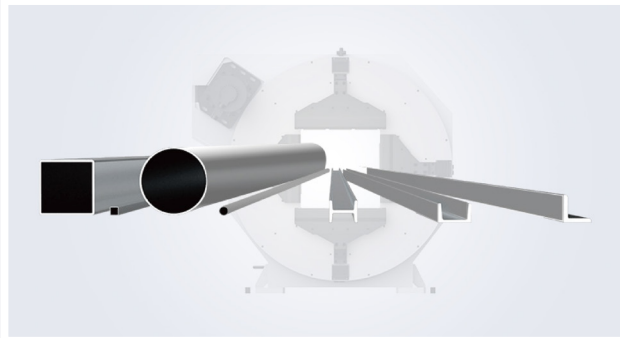
# HSG R3R SERIES

The HSG R3R Series is a heavy-duty tube fiber laser cutting machine designed to offer high performance and efficiency. The R3R provides reliable and precise cutting capabilities without compromising on quality. Its user-friendly features and robust design make it an excellent investment for those seeking cost-effective solutions in tube cutting.





# FEATURES



## Full-stroke Chucks

With the HSG full-stroke chucks, tubes can be manufactured across the entire clamping range from 20mm to 350mm without the need for retooling.

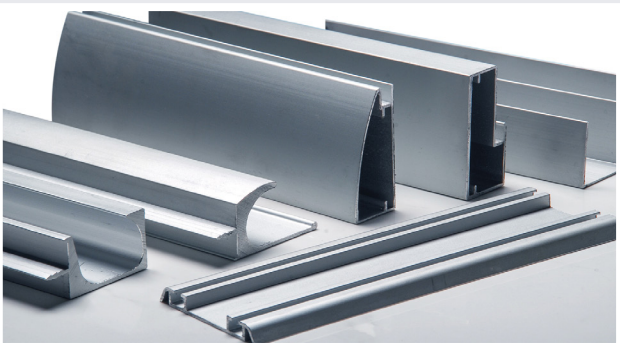


## Intelligent Bus Operating System

The system offers a range of auxiliary functions to meet diverse processing needs. Additionally, the machine features professional nesting software, facilitating efficient management of production progress and accurate price calculations.

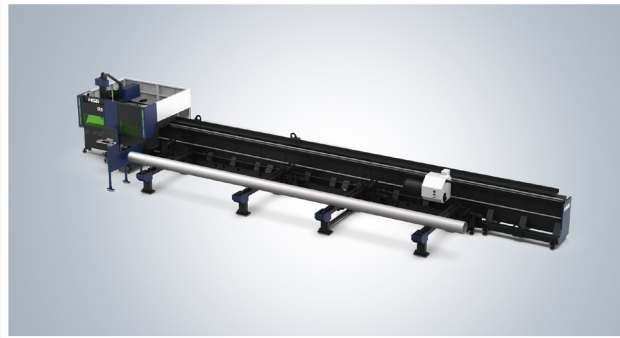
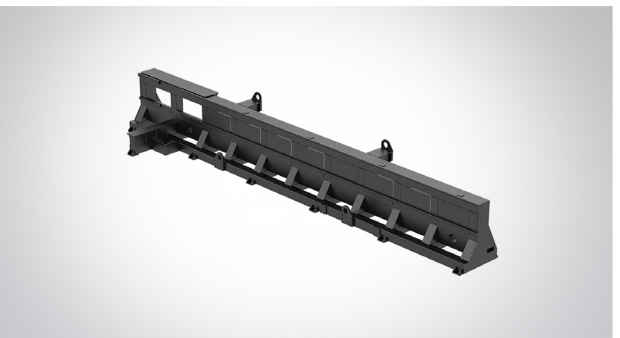
## Cut Open Profiles with Ease

The machine is equipped with specialised profile grippers, making it a breeze to cut steel profiles such as angle steel, channel steel and H steel.



## Lateral Hanging Machine Bed

The low center of gravity design of the lateral hanging bed improves safety, reduces manual handling effort, and makes tube loading more efficient.



## Automatic Loading and Unloading

The automatic loading and unloading of heavy tubes is both efficient and time-saving, significantly reducing production preparation time. It greatly enhances operational safety, cuts labor requirements, and lowers production costs.

## Tube Following Support System

Ensures precise cutting by providing stable support for long or heavy tubes throughout the cutting process. Designed to move in sync with the tube, it prevents sagging, vibration, and bending, maintaining accuracy and protecting material integrity.

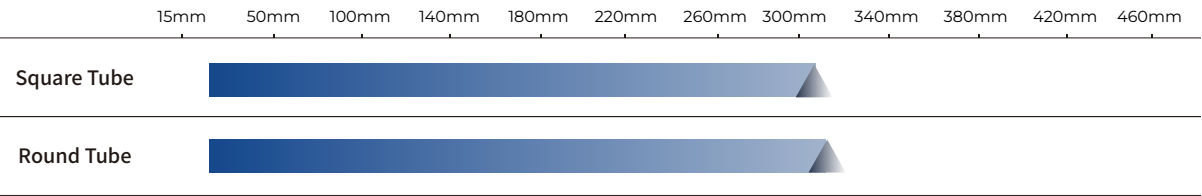


# SPECIFICATIONS

Parameters	R3R
Power (kW)	3 - 20
Max. Linkage Speed	80 m/min
Max. Linkage Acceleration	0.8G
X/Y Axis Positioning Accuracy	±0.03 mm/m
X/Y Axis Repositioning Accuracy	±0.03 mm
Tailing Length*	Single Chuck Clamping: ≥85mm / Double Chuck Clamping: ≥300mm
Cutting Capacity (mm)	Round Tubes: 20 - 355 Square Tubes: 20x20 - 350x350 Side Length: 20 - 350
Weight of Single Tube	600 kg
Overall Dimensions (LxWxH) (mm)	18300 x 2000 x 1650
Tube Length Range	1000 - 6500 mm

\*Under reasonable nesting conditions, the tailing length is the limit case, which is only achieved in some tubes and manual mode.  
Suggested Tube Length in Single Chuck Clamping ≤200mm, Weight of Tube ≤2kg.

## Laser Power



# LASER MACHINES

**At Laser Machines, we are committed to being Australia's trusted partner for laser cutting machinery and related equipment. Specialising in cutting-edge solutions, we empower businesses with the highest quality machinery and unmatched service and support.**

Our solutions-oriented approach prioritises customer satisfaction by delivering reliable products tailored to diverse needs and applications. With a focus on quality and service, we work closely with our clients throughout every step of their journey, ensuring they receive solutions designed to enhance operations and achieve their goals.

Backed by over 70 years of combined experience, our team collaborates directly with manufacturers to drive innovation and deliver machinery that meets the evolving demands of modern industries. At Laser Machines, we don't just supply equipment - we provide expertise, partnerships, and the tools for success.



[www.lasermachines.com.au](http://www.lasermachines.com.au)



Factory 17 116-118 Abbott Rd, Hallam VIC 3803



1300 561 963



[sales@lasermachines.com.au](mailto:sales@lasermachines.com.au)

