

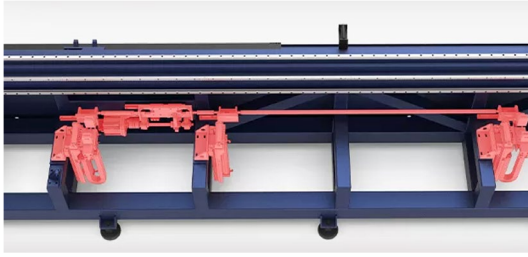
# R1R SERIES

High-speed Small Tube Laser Cutter

1500 - 3000W



# FEATURES



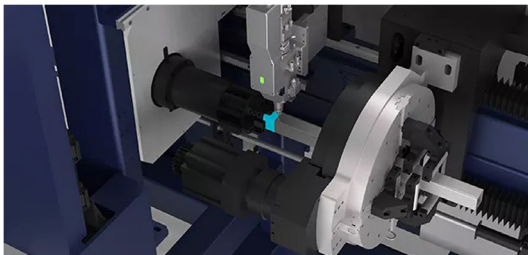
## Follow-up Support System

Ensures precise cutting by providing stable support for long or heavy tubes throughout the cutting process. Designed to move in sync with the tube, it prevents sagging, vibration, and bending, maintaining accuracy and protecting material integrity.



## Efficient Multi-mode Loading

The R1 Series, with automatic material racks, loads materials in just 20 seconds. These racks handle tubes from 20mm to 120mm in diameter and 4m to 6.5m in length, with a semi-automatic mode for single-tube loading.



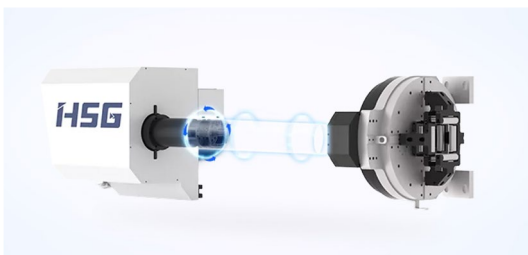
## Chuck Jumping for Short Tailings

Equipped with a cylinder chuck that can reduce the long tailing length by adjusting the chuck position. High-precision cutting with chuck adjustment helps maintain cutting accuracy on long tubes.



## Intelligent Bus Operating System

The system offers a range of auxiliary functions to meet diverse processing needs. Additionally, the T Series features professional nesting software, facilitating efficient management of production progress and accurate price calculations.



## Dynamic Performance

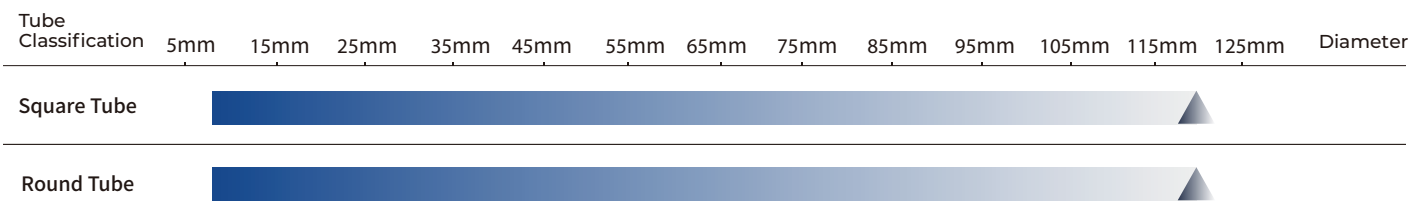
The machine can achieve 150r/min chuck rotational speed and 150m/min unloading operation speed.

# SPECIFICATIONS

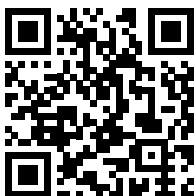
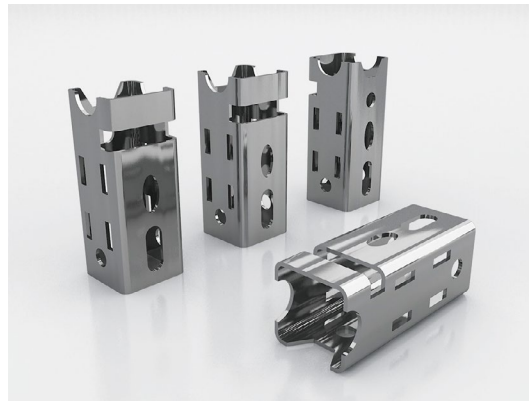
Parameters	R1R
Power (kW)	1.5 - 30
Max. Linkage Speed	150 m/min
Max. Linkage Acceleration	1.5G
X/Y Axis Positioning Accuracy	±0.05 mm/m
X/Y Axis Repositioning Accuracy	±0.03 mm
Tailing Length*	Single Chuck Clamping: ≥30mm / Double Chuck Clamping: ≥210mm
Cutting Capacity (mm)	Round Tubes: 8 - 120 Square Tubes: 8x8 - 120x120 Side Length: 8 - 120
Weight of Single Tube	50 kg
Overall Dimensions (LxWxH) (mm)	9630 x 2006 x 2622
Tube Length Range	1000 - 6500 mm

\*Under reasonable nesting conditions, the tailing length is the limit case, which is only achieved in some tubes and manual mode.  
Suggested Tube Length in Single Chuck Clamping ≤200mm, Weight of Tube ≤2kg.

## Laser Power



# CUTTING SAMPLES



[lasermachines.com.au](http://lasermachines.com.au)

1300 561 963

Factory 17 / 116 - 118 Abbott Rd,  
Hallam, VIC 3803

Unit 2 / 56 Central Hills Drive,  
Gregory Hills, NSW 2557

**LASER** MACHINES