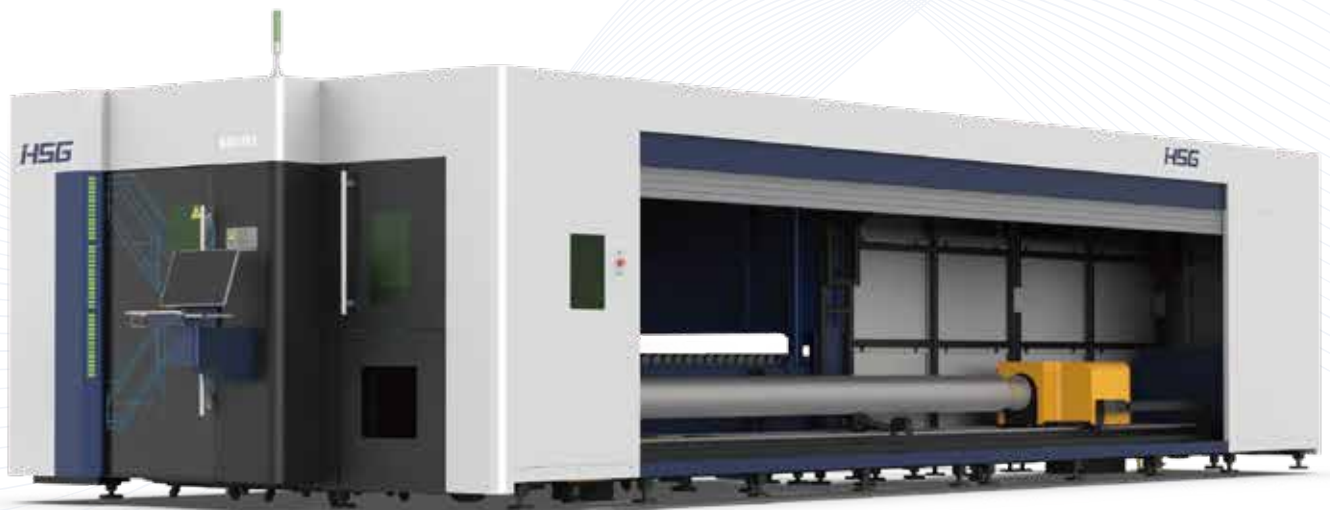




Cutting | Bending | Welding | Automation



GXE-QBW

✦ Double Exchange Platforms Sheet & Tube Laser Cutting Machine ✦

GXE-QBW 1500-6000W

Double Exchange Platforms Sheet & Tube Laser Cutting Machine



Technical Parameters

Technical Parameters	G3015XE
Power	1500W-6000W
Processing format (L*W)	3048mm*1524mm
X/Y-axis positioning accuracy	±0.03mm/m
X/Y-axis repositioning accuracy	±0.03mm
Max. Linkage Acceleration	0.5G
Max. Linkage Speed	60m/min

* Machine appearance, technical parameters, function description, data comparison shown in this page are from HSG in-house laboratory. All testing results and experimental data shall be subject to real machine.

HSG Bus-based Control System

- This system is easy to be operated and rich in functions.
- Even green hands can cut high-quality samples.
- Monitor core components in real time.
- Millisecond-level follow-up response technology.
- Click to create processing report.
- Compatible with codes of international brands.

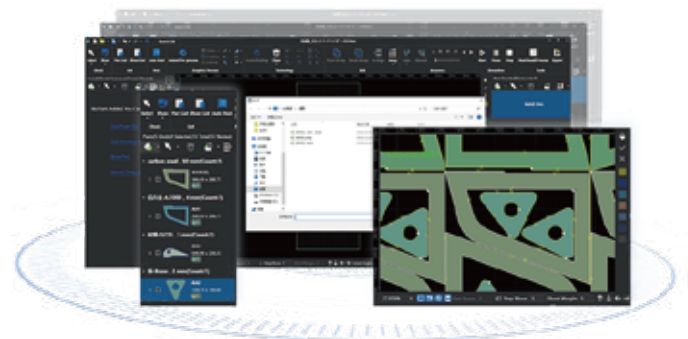


Automatic Focus Cutting Head

- Autofocus Laser Cutting Head
The cutting head can adjust its focus according to laser beam mode to make sure of mirror-like surface.
- Servo autofocus system
- Automatic cooling and obstacle avoidance
- Three built-in protective lens
- Anti-pollution design
- Give early warning if abnormal

Professional Nesting Software (Optional)

- No matter sheet cutting or tube cutting, it is equipped with professional nesting software to optimize cutting track and improve efficiency.





Exchange Platforms

- Achieve the cutting operation and loading and unloading synchronization.
- Before the switching motor, the rear workbench loading and unloading space is sufficient.
- The sheet metal cover is safe from damage.

Tube Splicing Technology

- The operating control offers 50+ kinds of tube splicing patterns, for convenience of subsequent welding, such as splicing of male and female head of square tube, 90° arc splicing, splicing of round tube tee, splicing of cut-through holes, 45° splicing of hexagon, splicing of angle iron and channel steel, etc.

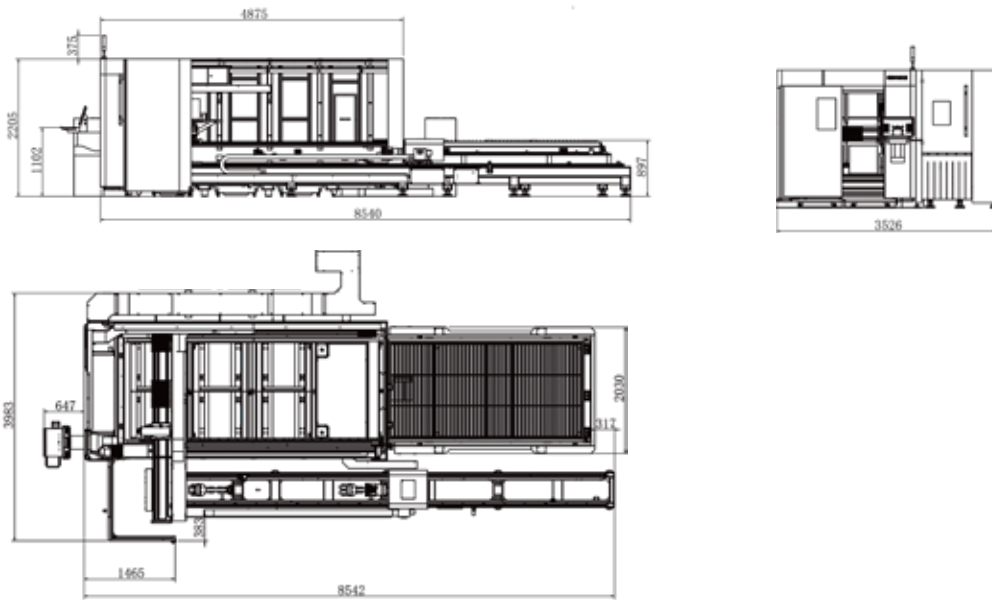


Automatic Pneumatic Double Chucks

- Automatic centering the chucks.
- Pneumatic chuck clamping with large clamping force.
- Special support frame to avoid tube sagging deformation.



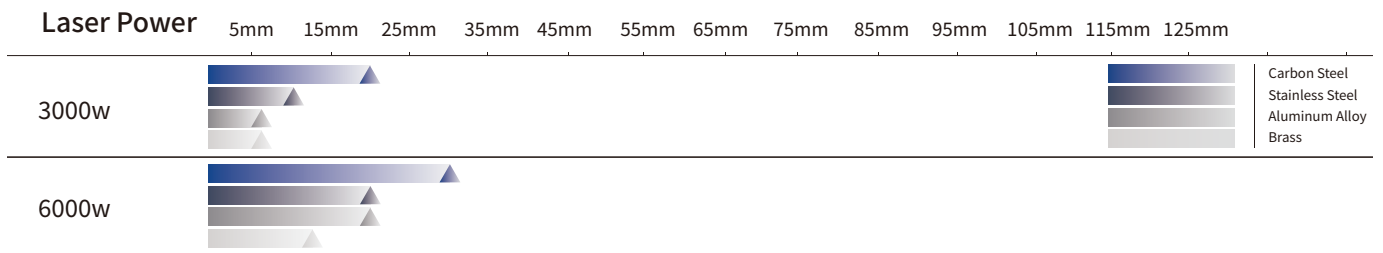
Machine Foundation *The marked size has about 10mm error



Cutting Samples



Cutting Capacity



The actual machines shall prevail and above data & pictures are only for reference.