

# NVA

## Laser Nozzle Visual Aligner

Advanced Laser Calibration



Compact Size  
 $\phi 105 \times 77 \text{mm}$

Calibration Accuracy  
 $\leq 0.08 \text{mm}$

Success Rate  
100%

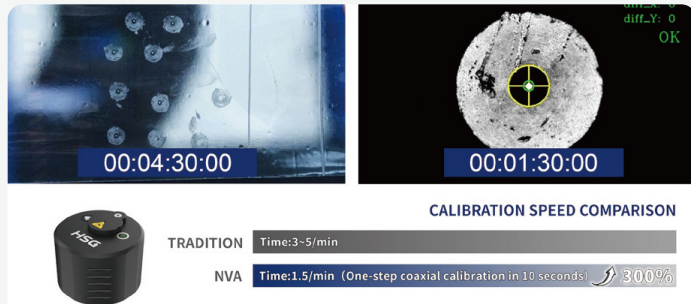
# NVA LASER NOZZLE VISUAL ALIGNER

The HSG Nozzle Visual Aligner (NVA) is a smart calibration tool that quickly and accurately aligns the laser nozzle with the beam path in under 1.5 minutes. Powered by AI vision and a high-precision circle fitting algorithm, it offers  $\leq 0.08$  mm accuracy. Compact and wireless, the NVA connects to a visual interface and guides users through a simple three-step process. It reduces human error, improves cut quality, and enhances consistency across production runs, making it ideal for both high-volume manufacturing and frequent material changes.



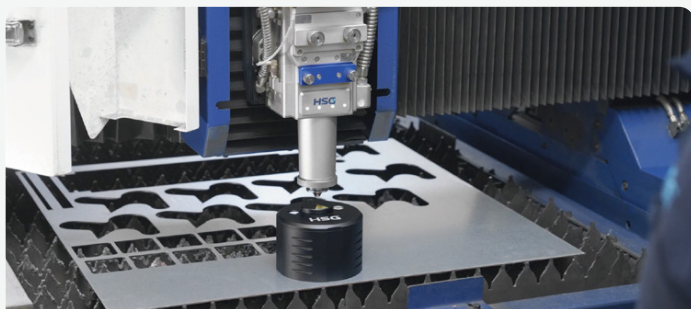
## Streamlined and Efficient Calibration

The HSG Nozzle Visual Aligner simplifies the calibration process by enabling precise alignment in a single step. This dramatically reduces machine setup time, boosts cutting efficiency, and minimizes material waste - ultimately saving both time and operating costs.



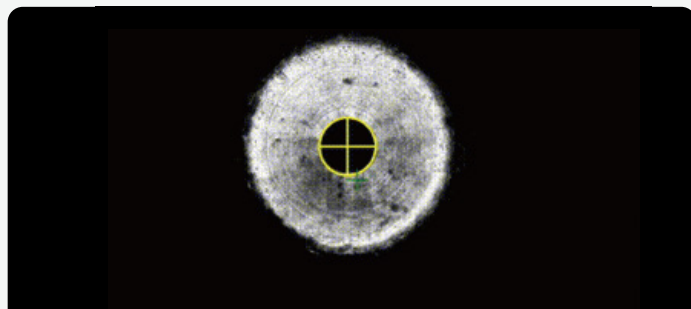
## Intuitive Visual Guidance

Designed with ease-of-use in mind, the NVA eliminates the need for operator experience or guesswork. Leveraging HSG's advanced circle fitting algorithm, the alignment process is displayed in real time on your smartphone, making it simple and accessible.



## Precise, Reliable, and Laser-Free

Calibration is performed without the need to emit laser beams, removing associated safety risks. This non-contact method ensures a safer work environment without compromising accuracy or reliability.



## Advanced Accuracy Technology

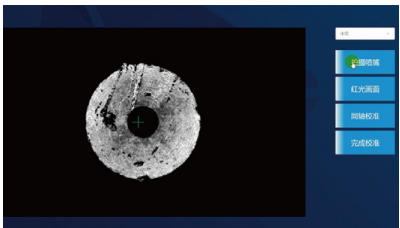
Powered by HSG's high-precision circle fitting algorithm, the NVA delivers alignment accuracy within  $\leq 0.08$  mm and guarantees a 100% success rate - eliminating calibration errors for consistent, high-quality results.

## Fast 3-Step Calibration



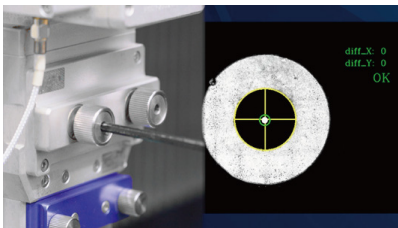
### Step 1

Align the device by moving the red laser dot to the center point. Open the protective slider.



### Step 2

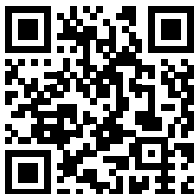
Connect your phone to Wi-Fi and enter the visual simulation interface.



### Step 3

Utilise AI Vision to achieve precise, streamlined calibration.

Parameters	NVA
Coaxial Error	<0.08mm
Applicable Nozzle Specifications (Recommended)	φ 1.0mm - φ 3.0mm (Recommend using the standard φ 1.2 nozzle)
Weight	575g (Excluding Battery)
Dimensions	77mm (H) x 105mm (dia.)
Power Supply	External power bank or built-in 14500 battery



[lasermachines.com.au](http://lasermachines.com.au)

1300 561 963

Factory 17 / 116 - 118 Abbott Rd,  
Hallam, VIC 3803

Unit 2 / 56 Central Hills Drive,  
Gregory Hills, NSW 2557

**LASER MACHINES**