



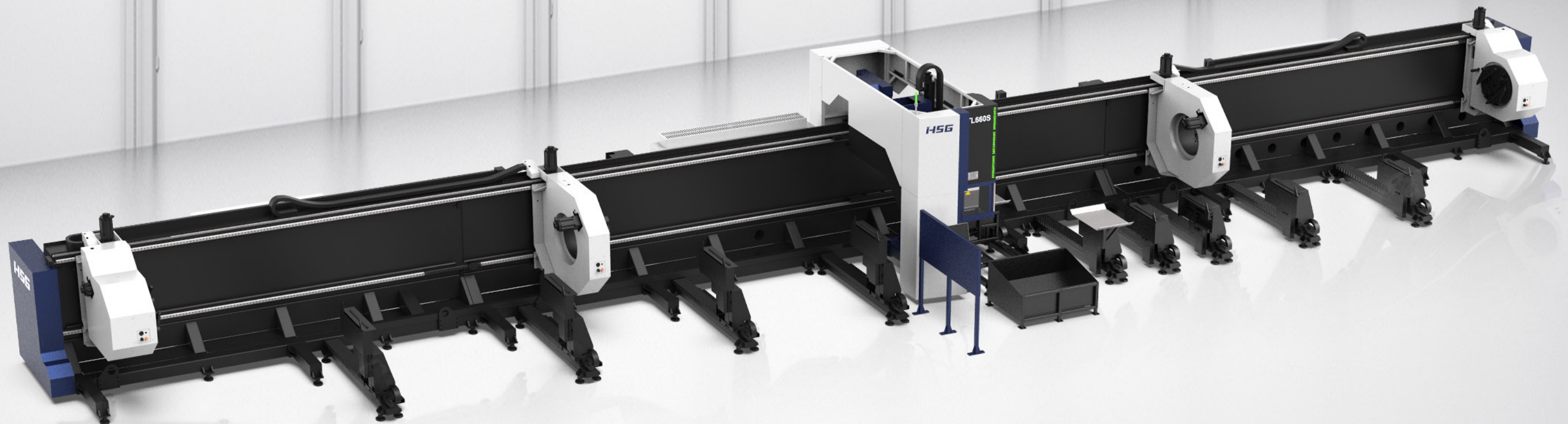
## TL SERIES

Heavy Duty Tube Laser Cutter



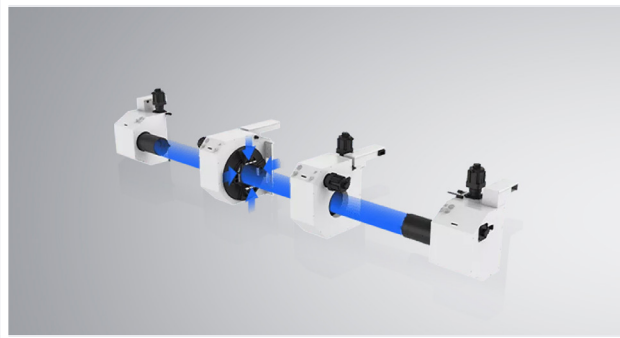
# HSG TL SERIES

The HSG Laser TL Series Four-chuck Heavy-duty Tube Laser Cutting Machine is a cutting-edge solution for precision tube metal fabrication. With advanced fiber laser technology, it offers unparalleled performance, high-speed cutting, and exceptional accuracy across various types of metals and thicknesses.



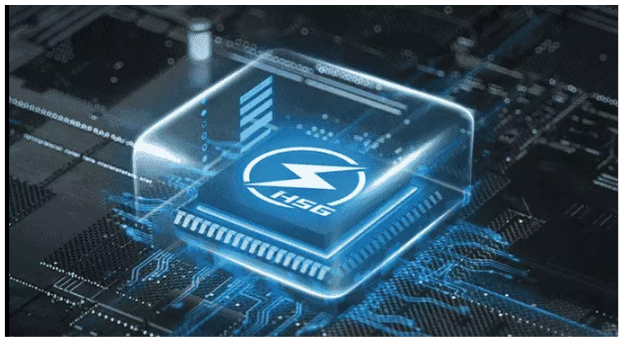


# FEATURES



## Four Chucks Structure

Designed for maximum stability and control when cutting large or heavy tubes, this setup uses heavy-duty pneumatic chucks for firm multi-point clamping, reducing vibration and deformation for precise, reliable performance.

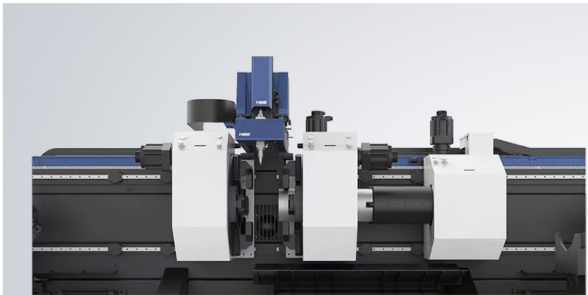


## Power-Off Cutting Restart Technology

Equipped with a high-precision servo motor featuring an absolute encoder, the machine supports seamless cutting restart after a power outage. This means that in the event of a power failure, users can simply resume cutting from the exact point where it stopped - eliminating the need for manual repositioning and reducing material waste.

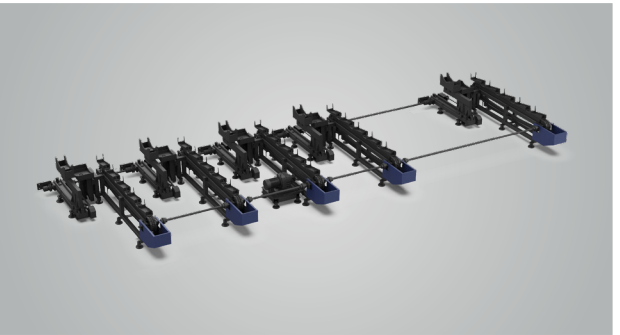
## Cut with Short Tailings

By optimising the position and coordination of the chucks, the machine can cut much closer to the clamping area—significantly shortening the uncut tail end. This not only minimises scrap but also improves cost-efficiency across production runs.



## Automatic Loading (Optional)

An optional multi-functional loading system supports automatic loading of round tubes, rectangular tubes, section steel, and other profiles—enhancing loading speed and overall efficiency.

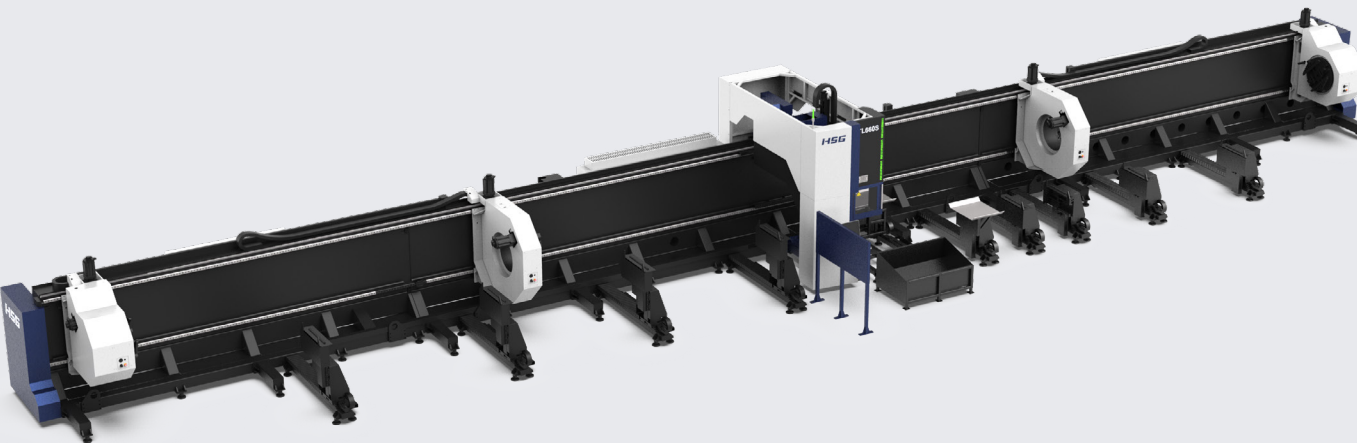
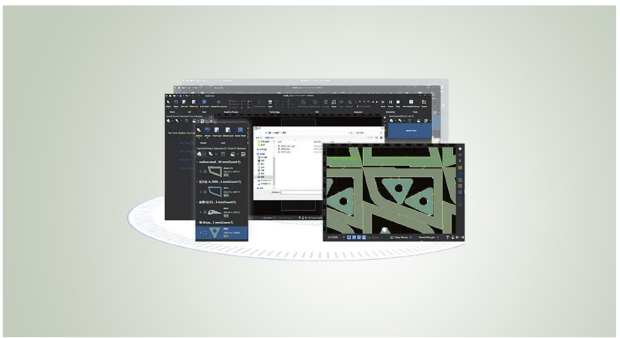


## HSG-X Control System

HSG-X control system is bus-based and developed by HSG Laser. With intelligent and easy-to-operate service, it can offer users effective solutions to address problems of difficult operation, low efficiency and high costs.

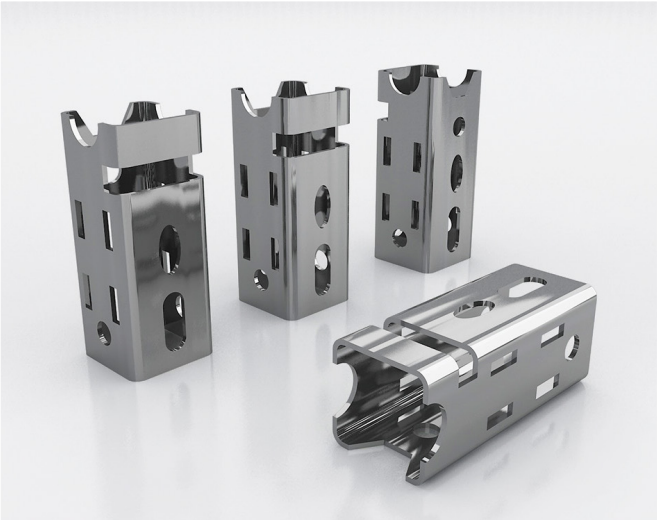
## Various Tube Processing Functions

HSG's intelligent cutting features—like space leapfrog, fly cutting, and break-point resume—boost speed and reduce waste. Four-side centering ensures accurate alignment, while smart nesting software maximises material efficiency.



# SPECIFICATIONS

| Parameters                         |                       | TL660                                      |
|------------------------------------|-----------------------|--|
| Power (kW)                         |                       | 6 - 12                                     |
| Chuck Speed (RPM)                  |                       | 30 r/min                                   |
| Max. Linkage Speed                 |                       | 50 m/min                                   |
| Max. Linkage Acceleration          |                       | 0.2G                                       |
| X/Y Axis Positioning Accuracy      |                       | ±0.01 mm/m                                 |
| X/Y Axis Repositioning Accuracy    |                       | ±0.01 mm                                   |
| X Axis Travel                      |                       | ≥ 12500 mm                                 |
| Y Axis Travel                      |                       | ≥ 680 mm                                   |
| Z Axis Travel                      |                       | ≥ 600 mm                                   |
| Tube Cutting Capacity              | Round:                | 80 - 660 mm                                |
|                                    | Square:               | 80 - 450 mm                                |
|                                    | Rectangle:            | Side length: ≥ 80 mm<br>Diagonal: ≤ 660 mm |
|                                    | Angle Steel:          | 80 x 80 mm - 250 x 250 mm                  |
|                                    | Channel Steel:        | 250 - 80 mm - 400 x 104 mm                 |
|                                    | L Beam:               | 140 x 80 mm - 560 x 170 mm                 |
|                                    | H Beam:               | 100 x 100 mm - 400 x 400mm                 |
| Max. Manual Loading Cutting Length |                       | 12500 mm                                   |
| Tube Length Range                  |                       | 3000 - 12000 mm                            |
| Machine Weight (kg)                | Without Loading Rack: | 30000                                      |
|                                    | With Loading Rack:    | 34000                                      |
| Loading Capacity (kg)              |                       | 3000                                       |
| Total Power / Current              |                       | 53kW / 105A (3000w)<br>63kW / 126A (6000w) |
| Dimensions (LxWxH)                 |                       | 29000 x 6000 x 4000 mm                     |



# LASER MACHINES

**At Laser Machines, we are committed to being Australia's trusted partner for laser cutting machinery and related equipment. Specialising in cutting-edge solutions, we empower businesses with the highest quality machinery and unmatched service and support.**

Our solutions-oriented approach prioritises customer satisfaction by delivering reliable products tailored to diverse needs and applications. With a focus on quality and service, we work closely with our clients throughout every step of their journey, ensuring they receive solutions designed to enhance operations and achieve their goals.

Backed by over 70 years of combined experience, our team collaborates directly with manufacturers to drive innovation and deliver machinery that meets the evolving demands of modern industries. At Laser Machines, we don't just supply equipment - we provide expertise, partnerships, and the tools for success.



[www.lasermachines.com.au](http://www.lasermachines.com.au)



Factory 17 116-118 Abbott Rd, Hallam VIC 3803



1300 561 963



[sales@lasermachines.com.au](mailto:sales@lasermachines.com.au)

