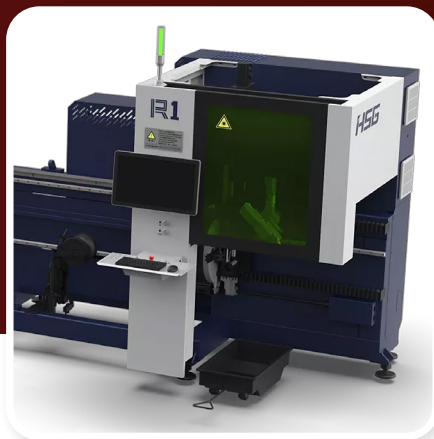
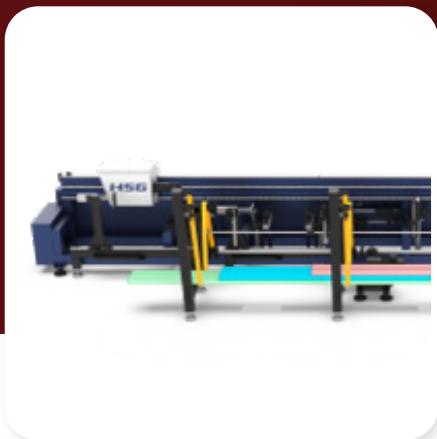


# R1R SERIES

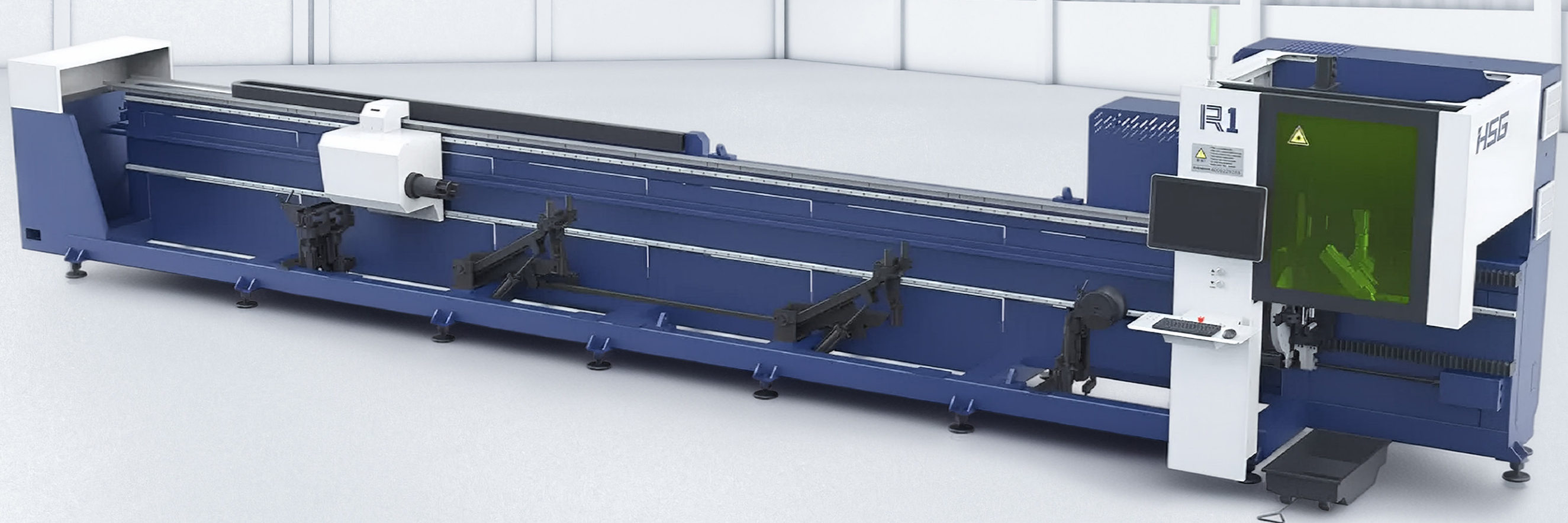
High Speed Small Tube Laser Cutter





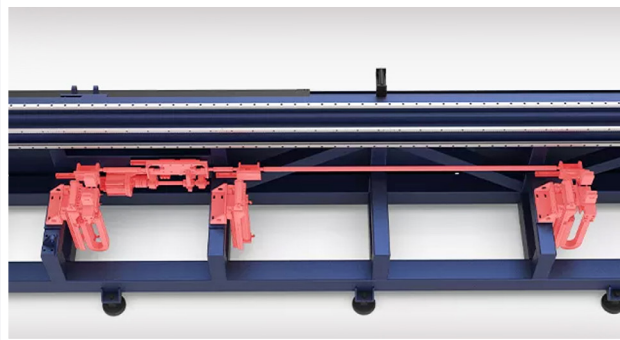
# HSG R1R SERIES

The HSG R1R Series offers precision and efficiency with rapid material loading in just 20 seconds. Compatible with tubes of various sizes, it handles diameters from 8mm to 120mm and lengths up to 6.5m. Ideal for high-precision cutting, it features advanced chuck adjustments and supports both automatic and semi-automatic loading modes, making it perfect for streamlined production processes.



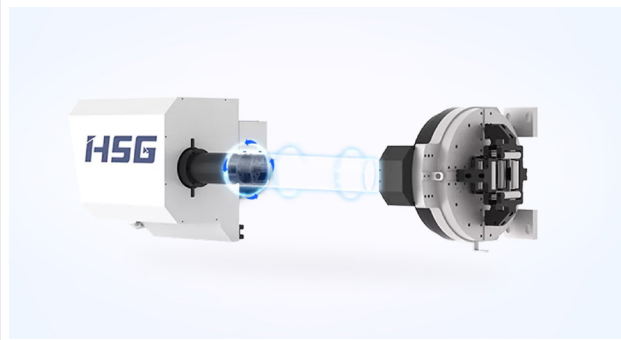


# FEATURES



## Follow-up Support System

Ensures precise cutting by providing stable support for long or heavy tubes throughout the cutting process. Designed to move in sync with the tube, it prevents sagging, vibration, and bending, maintaining accuracy and protecting material integrity.

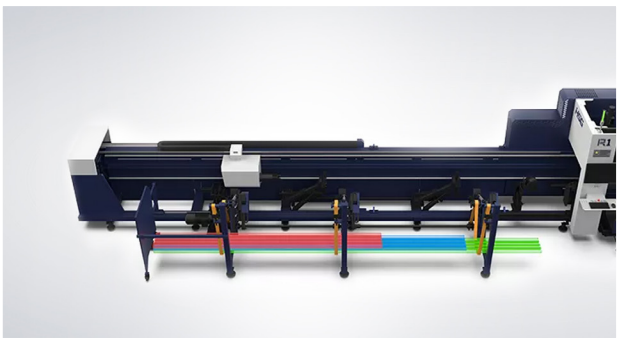


## Dynamic Performance

The machine can achieve 150r/min chuck rotational speed and 150m/min unloading operation speed.

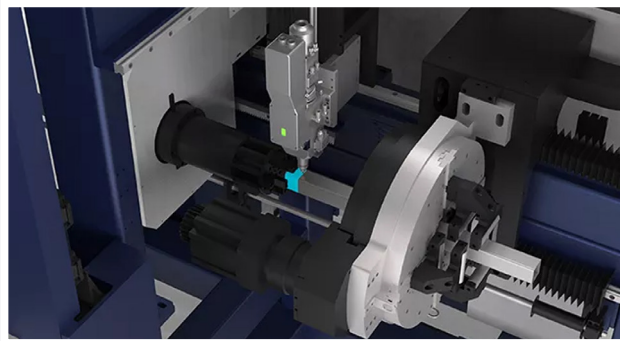
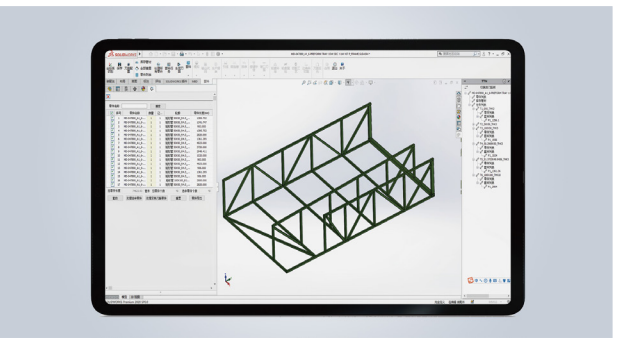
## Efficient Multi-mode Loading

The R1 Series, with automatic material racks, loads materials in just 20 seconds. These racks handle tubes from 20mm to 120mm in diameter and 4m to 6.5m in length, with a semi-automatic mode for single-tube loading.



## Professional Nesting Software

The software efficiently processes large amounts of data, providing strong support for complex cutting graphics. It also offers multiple functions to meet diverse machining surface requirements, ensuring flexibility for different customer needs.



## Chuck Jumping for Short Tailings

Equipped with a cylinder chuck that can reduce the long tailing length by adjusting the chuck position. High-precision cutting with chuck adjustment helps maintain cutting accuracy on long tubes.

## Intelligent Bus Operating System

The system offers a range of auxiliary functions to meet diverse processing needs. Additionally, the T Series features professional nesting software, facilitating efficient management of production progress and accurate price calculations.

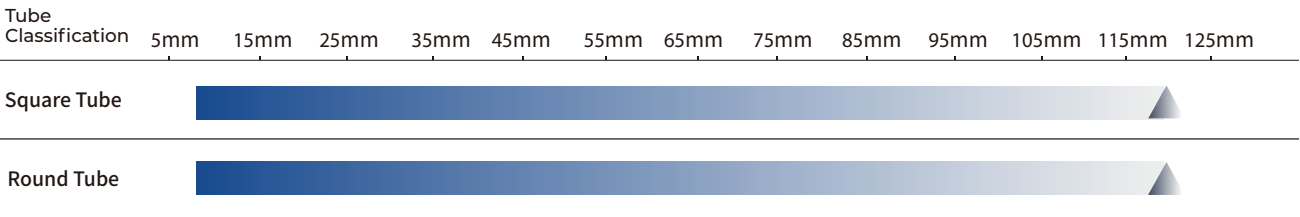


# SPECIFICATIONS

Parameters	R1R
Power (kW)	1.5 - 30
Max. Linkage Speed	150 m/min
Max. Linkage Acceleration	1.5G
X/Y Axis Positioning Accuracy	±0.05 mm/m
X/Y Axis Repositioning Accuracy	±0.03 mm
Tailing Length*	Single Chuck Clamping: ≥30mm / Double Chuck Clamping: ≥210mm
Cutting Capacity (mm)	Round Tubes: 8 - 120 Square Tubes: 8x8 - 120x120 Side Length: 8 - 120
Weight of Single Tube	50 kg
Overall Dimensions (LxWxH) (mm)	9630 x 2006 x 2622
Tube Length Range	1000 - 6500 mm

\*Under reasonable nesting conditions, the tailing length is the limit case, which is only achieved in some tubes and manual mode.  
Suggested Tube Length in Single Chuck Clamping ≤200mm, Weight of Tube ≤2kg.

## Laser Power



# LASER MACHINES

**At Laser Machines, we are committed to being Australia's trusted partner for laser cutting machinery and related equipment. Specialising in cutting-edge solutions, we empower businesses with the highest quality machinery and unmatched service and support.**

Our solutions-oriented approach prioritises customer satisfaction by delivering reliable products tailored to diverse needs and applications. With a focus on quality and service, we work closely with our clients throughout every step of their journey, ensuring they receive solutions designed to enhance operations and achieve their goals.

Backed by over 70 years of combined experience, our team collaborates directly with manufacturers to drive innovation and deliver machinery that meets the evolving demands of modern industries. At Laser Machines, we don't just supply equipment - we provide expertise, partnerships, and the tools for success.



[www.lasermachines.com.au](http://www.lasermachines.com.au)



Factory 17 116-118 Abbott Rd, Hallam VIC 3803



1300 561 963



[sales@lasermachines.com.au](mailto:sales@lasermachines.com.au)

