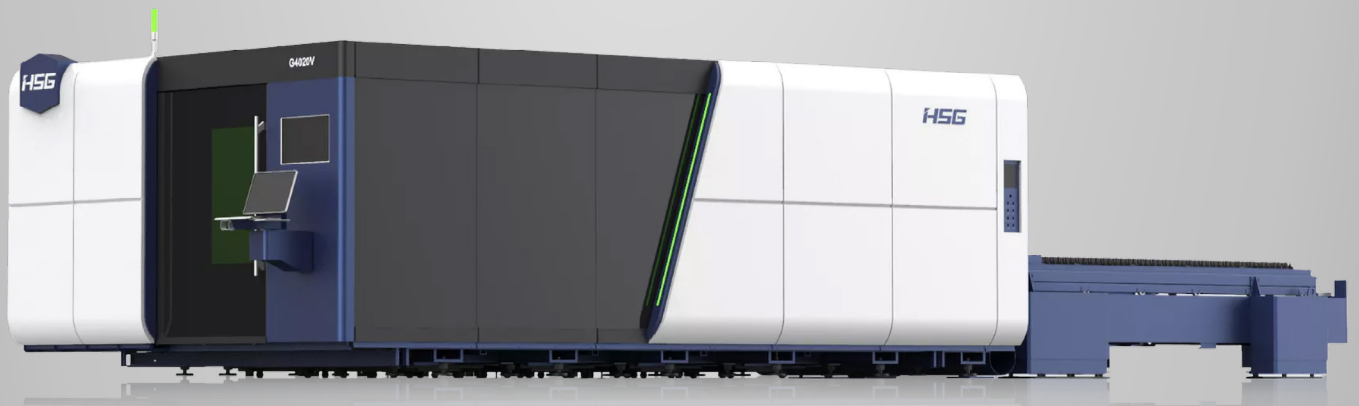


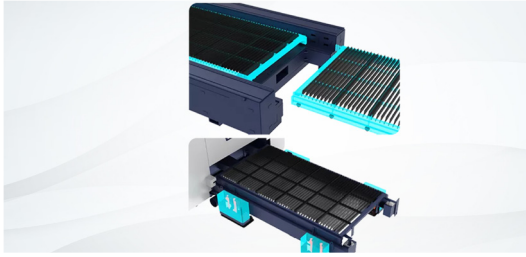
GV SERIES

All Linear Motor Sheet Laser Cutter

6000 - 60000W

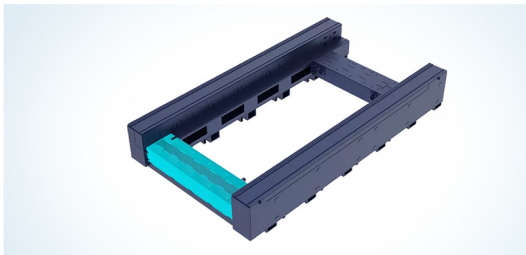


FEATURES



Hydraulic Lifting Exchange System

The HSG GV series features a reliable German hydraulic lifting system and a single-table exchange for better air extraction. With no height difference, the Z-axis moves less, ensuring stability for high-speed cutting.



Special Machine Bed for High Power

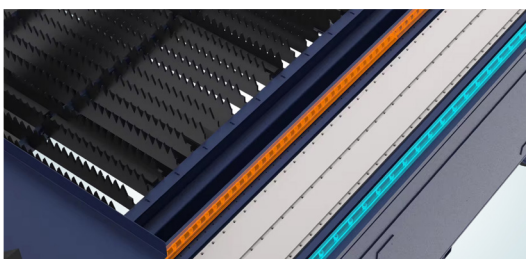
The machine bed is constructed by several ultra-thick sheets welded together and designed with a unique hollow structure. In the laser cutting area, there are no connections at the bottom of the bed, reducing susceptibility to heat and ensuring stability and durability.



High-speed Cutting Dynamics

The GV Series features advanced triaxial linear motors for exceptional speed, precision, and dynamic performance, ensuring nanoscale accuracy and superior cutting.

(Max. Linkage Speed: 300m/min | Max. Linkage Acceleration: 6G)



High-load Double Rail Structure

The GV Series utilises German Rexroth rails, that contain both a roller guider and measuring guider, ensuring stable and reliable processing for users. These double rails are designed with high load capacity, rigidity, and features for dust prevention and waterproofing.



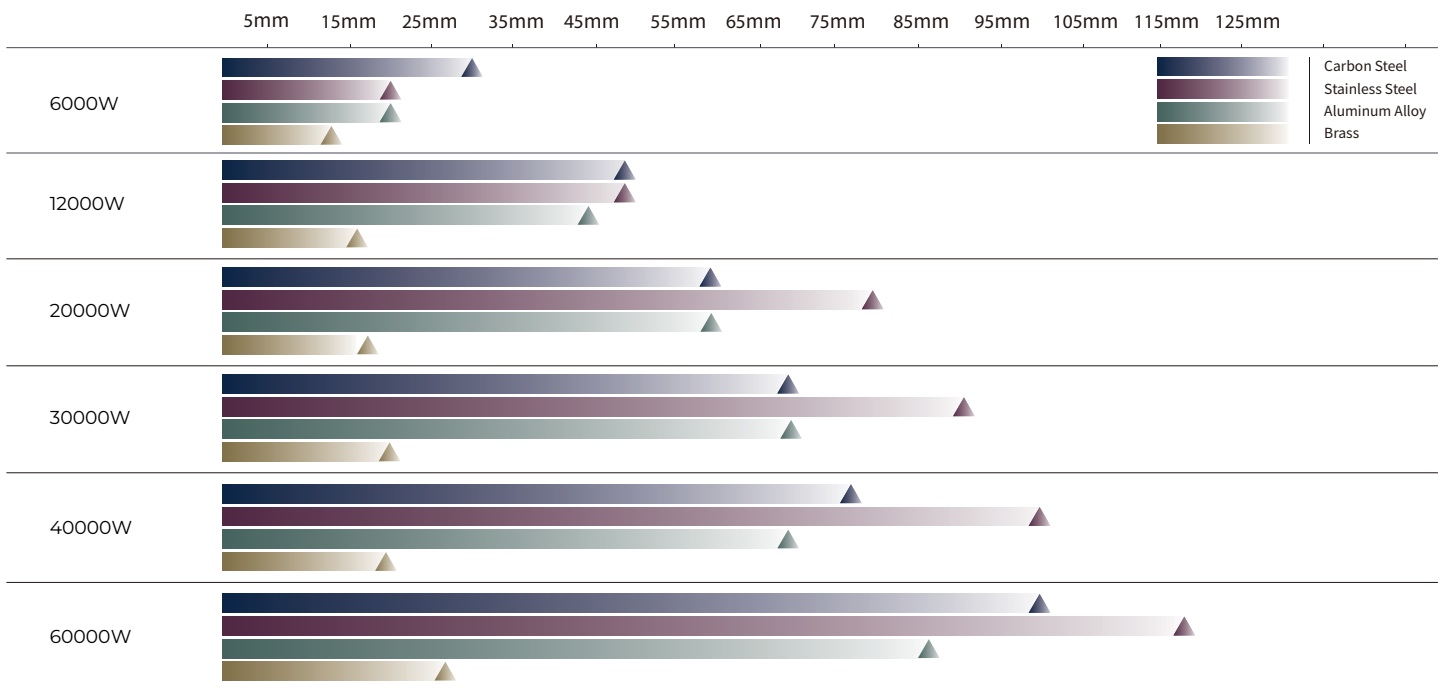
Precision Cutting of Thick Sheet Metal

The GV series offers a selection of laser cutting heads ranging from 6 to 60 kW. Enhanced laser power allows for rapid cutting of thick sheet metal, optimising speed and efficiency in demanding applications.

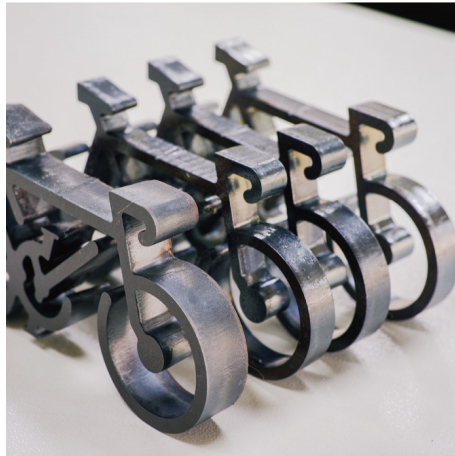
SPECIFICATIONS

Parameters	G4020V
Power (kW)	6 - 60
Cutting Area (mm)	4064 x 2040
Max. Linkage Speed	300 m/min
Max. Linkage Acceleration	6G
X/Y Axis Positioning Accuracy	±0.01 mm/m
X/Y Axis Repositioning Accuracy	±0.01 mm
Overall Dimensions (LxWxH) (mm)	12400 x 4430 x 2870

Laser Power



CUTTING SAMPLES



lasermachines.com.au
1300 561 963

Factory 17 / 116 - 118 Abbott Rd,
Hallam, VIC 3803

Unit 2 / 56 Central Hills Drive,
Gregory Hills, NSW 2557

LASER MACHINES